

LUHR·JENSEN

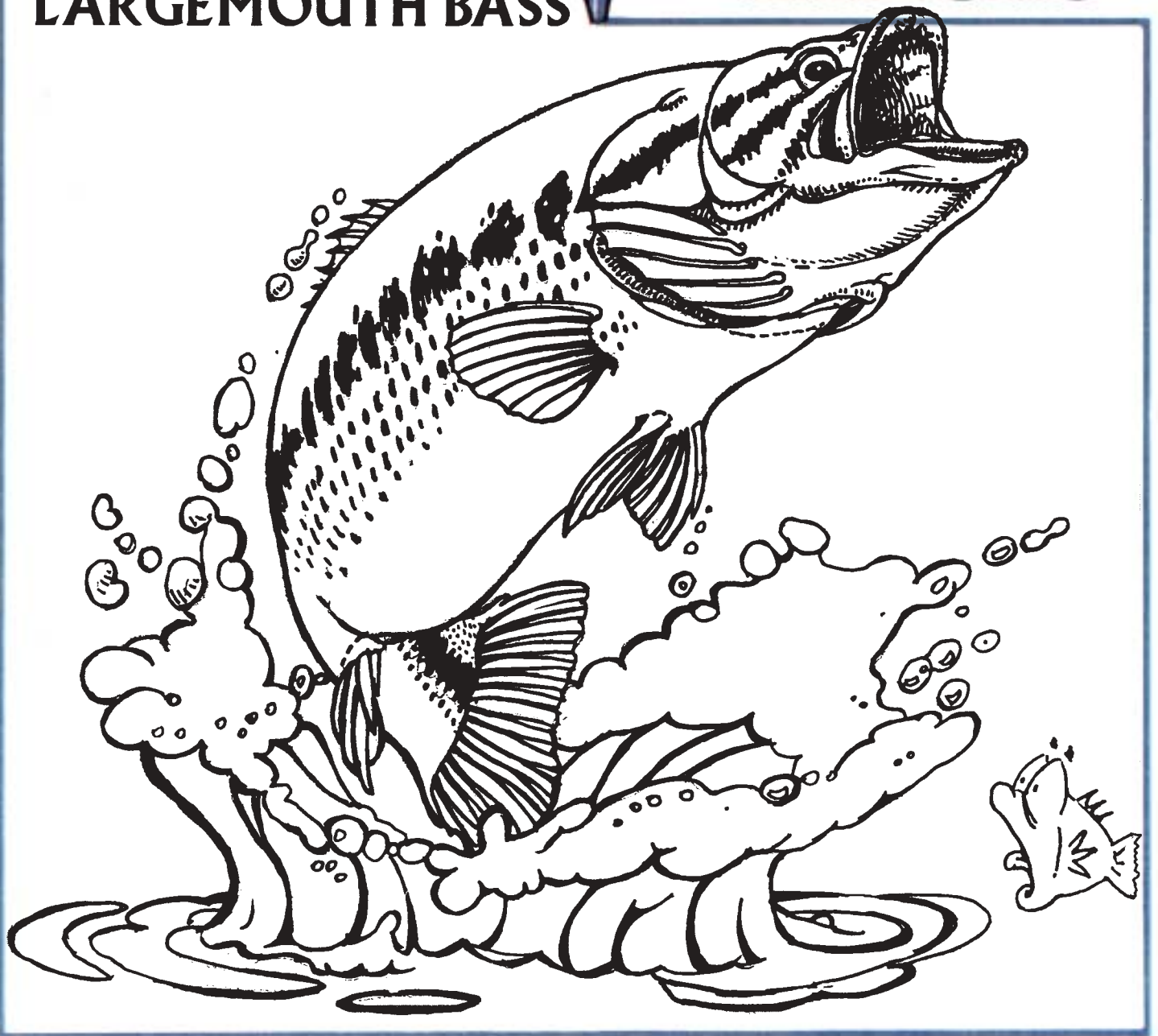


fishing

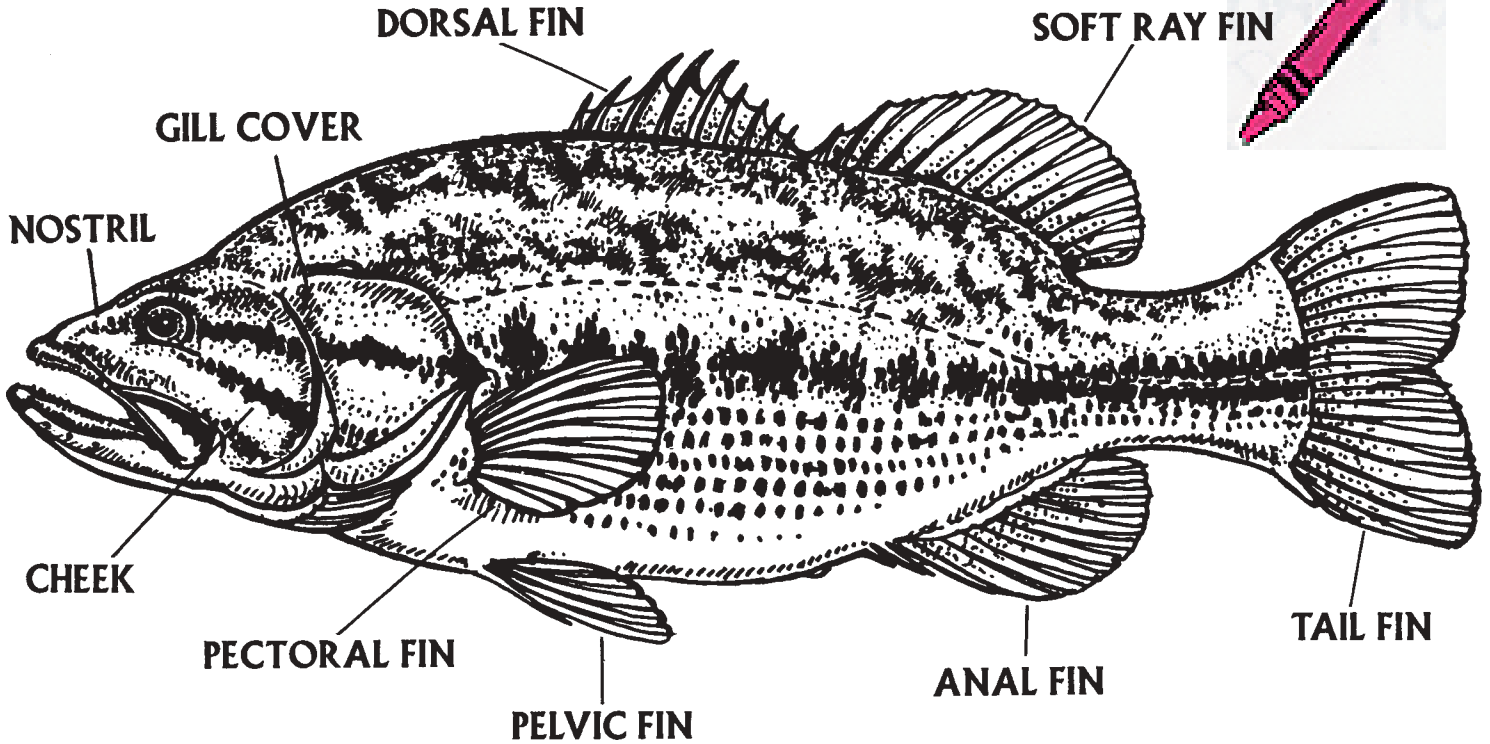


fun
for kids

LARGEMOUTH BASS



PARTS OF A BASS



HELP BARNE BEAVER FIND THESE WORDS!

C S N R Q P L G V E N G C T F C N B
 J H O T L I P S E N I P L R H T E R
 B E O P V P S D S H G A U L B I C U
 A U J R O S D A L T O N M K N D X S
 S P M P S I Q X D F D Y F L C S B H
 S U J Y D I N Z T A A R X P P V L B
 O P A I X D I L B S D O Z L F E A A
 R L P R T D V O U L W Y S W C I K B
 E I C M T W A D S K A P R F G T B Y
 N I F E G N K T P L L C O N D R G U
 O H Y G E L R Y A D K Z B K R O Y K
 I T P Z G M Q N Z W P C E P X U N L
 A F S P E E D T R A P S X I M T H Y
 G D R K U Z Q K P N E B U Z T G Q K
 T W O O D C H O P P E R U O E H U T
 S O K H L E S L G W S E P S K O O H

FIND THESE WORDS AND
CIRCLE THEM! THEY CAN BE
FORWARD, BACKWARDS,
DIAGONAL OR UP AND
DOWN!

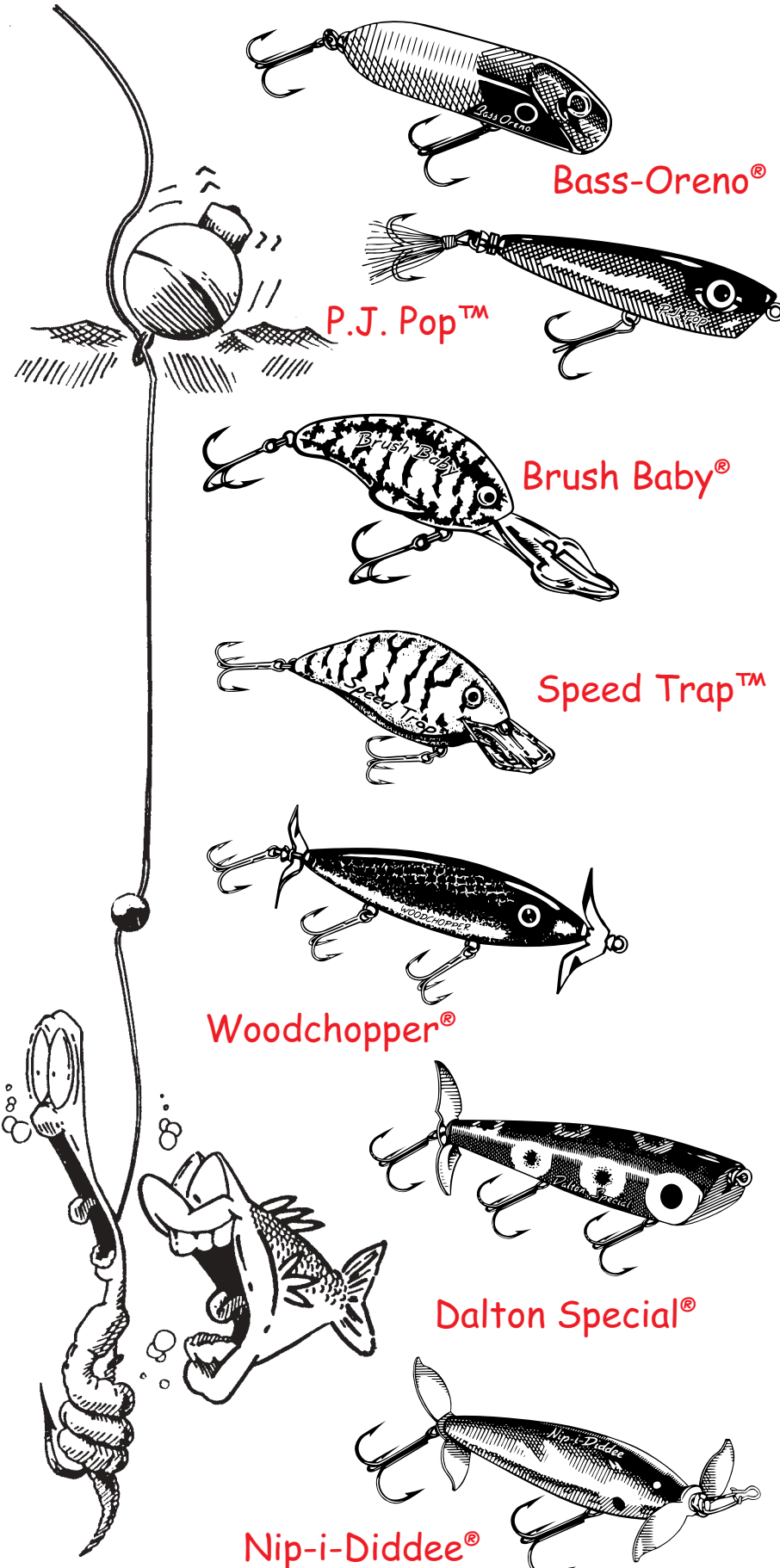
HOOKS
 HOT LIPS
 NIP-I-DIDDEE
 WOODCHOPPER
 KLAWDAD
 BASS-ORENO
 BRUSH BABY
 SPEED TRAP
 DALTON
 PJ POP



BAITS FOR BASS

TOPWATER BAITS

BAITS SUCH AS THE BASS-ORENO®, KLAWDAD™ AND P.J. POP™ ARE CAST AND RETRIEVED, MOVING THE ROD TIP FROM SIDE-TO-SIDE, STOPPING AND RESTARTING TO REEL. THIS MAKES THE LURE MOVE AND DIVE, ACTING LIKE A LARGE FOOD ITEM SUCH AS A FROG, SALAMANDER OR BIG INSECT AS IT MOVES ACROSS THE WATER. THIS ACTION ATTRACTS BASS AND MAKES THEM STRIKE. BASS ANGLERS REFER TO ALL LURES AS "BAITS" EVEN THOUGH THEY ARE NOT LIVE BAIT.



Bass-Oreno®

P.J. Pop™

Brush Baby®

Speed Trap™

Woodchopper®

Dalton Special®

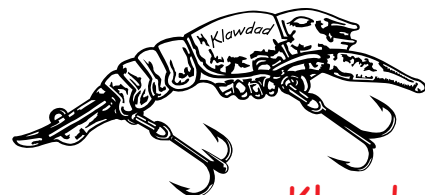
Nip-i-Diddee®

BUZZ BAITS

THESE BAITS HAVE PROPELLERS ON THE BACK OR BOTH THE FRONT AND BACK. LURES SUCH AS THE NIP-I-DID-DEE® AND WOODCHOPPER® ARE DESIGNED TO CREATE A LOT OF NOISE AND WATER MOTION AS THEY ARE CAST AND REELED BACK IN. YOU NEED TO STOP AND RESTART REELING, MOVE THE ROD TIP AND LET THE LURE TAKE ADVANTAGE OF ITS NATURAL ACTION TO MAKE A BASS GET CURIOUS AND STRIKE.

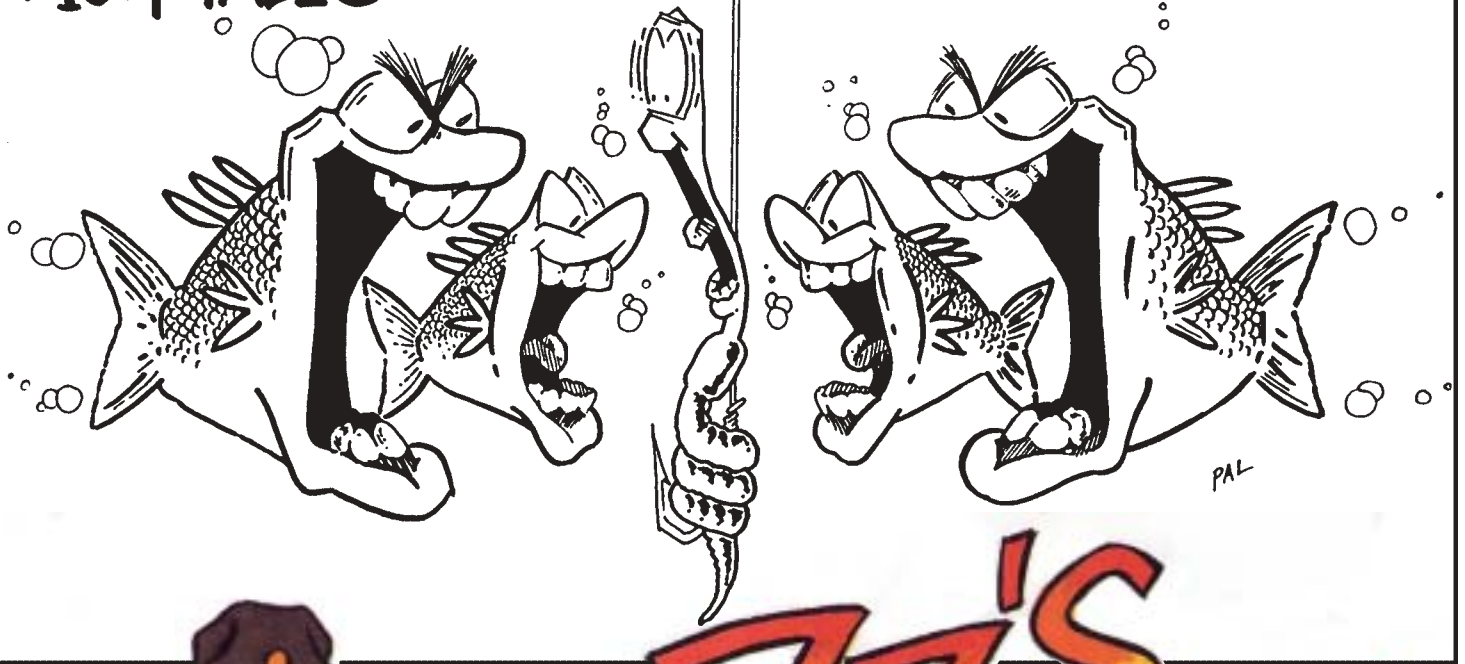
DIVING CRANKBAITS

THE HOT LIPS EXPRESS®, SPEED TRAP™ AND BRUSH BABY® ARE LURES THAT HAVE A LIP ON THE FRONT THAT MAKES THEM DIVE WHEN YOU START REELING IN THE LINE. THESE IMITATE SALAMANDERS, MINNOWS AND OTHER NATURAL SWIMMING BAIT. UNLIKE TOPWATER BAITS, THESE DIVE DOWN UNDER THE WATER. YOU NEED TO VARY YOUR REELING SPEED TO MAKE THEM MOVE LIKE THE REAL THING.



Klawdad™

FISH TALES



BUZZZ'S BUDDIES

WE WOULD LIKE TO HEAR FROM YOU, AND
IF YOU WANT TO, PLEASE INCLUDE A PHOTO
OR DRAWING OF THE FISH YOU CAUGHT!

NAME _____
ADDRESS _____
PHONE _____
WHERE YOU CAUGHT YOUR FISH _____



WRITE TO:
LUHR JENSEN CUSTOMER SERVICE
P.O. BOX 297
HOOD RIVER, OR 97031