



SPEED TRAP TECH SHEET

Speed Kills! The *Speed Trap™* series are the best shallow-running crankbaits in the tackle industry and their design is not just a fortunate accident. Expensive computerized mold technology was used in the final design to create a “thin-wall” lure body shell that produces the action and vibration of handmade wood lures, while retaining the durability and consistency of an injection-molded plastic body.

There are several very important design characteristics that make the Speed Trap different from the typical shallow-running crankbait or “alphabet-style” lure. These are the “tool” features you should concentrate on when you apply this lure to a certain body of water!

1. A properly-tuned Speed Trap will run dead straight as *fast* as you can crank it! At the same time, it does not lose any low or mid-speed body action or vibration. It achieves this by good design and balance. Many anglers think only lipless, vibrating, rattle lures can do this, but the Speed Trap achieves this in a floating, snag-resistant, clear-lipped crankbait.

2. It is especially important for you to know that Speed Traps have an intermediate diving depth or depth control right between the typical fat body shallow runner and the mid-depth divers. The lure also has a sharper dive angle than fat alphabet-style lures or flat-sided, shallow-running crankbaits. Because of this, the Speed Trap often dominates these lures in fish response whenever you need a modern high-vibration crankbait to run in the 3- to 10-ft. depth range. A sharp dive angle also gets you there quicker, especially along steep banks and weed lines.

Use the larger Speed Trap in the 3- to 10-ft. range because you can easily reach the 6- to 8-ft. depths with it on 10- to 12-lb. line. Use the *Baby Speed Trap™* in the 2- to 6-ft. depths.

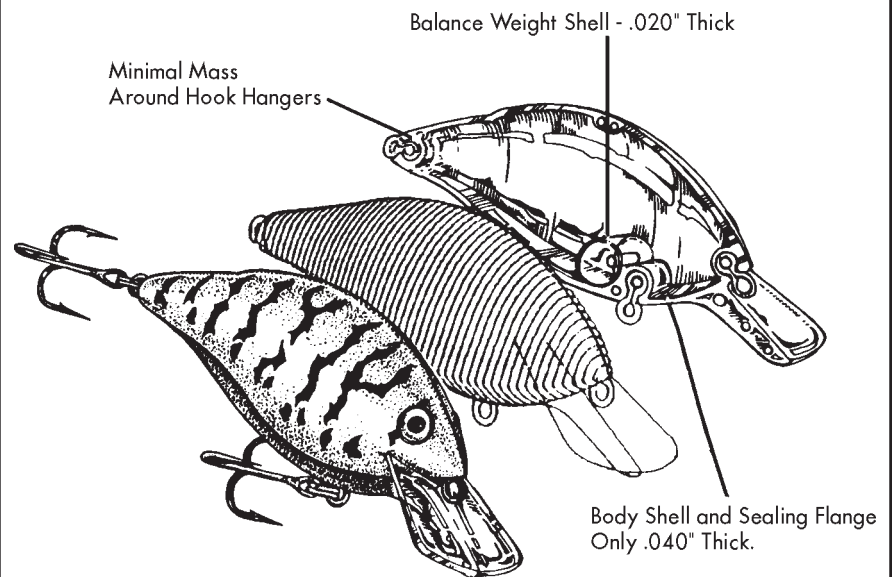
When you crank these lures, remember that many fish, especially in rivers, will come up several feet to get it.

3. The Speed Trap s have wide lips and an intermediate-width body. This makes them good in wood and rock cover and you have the option to float them back off of snags as you contact them.

4. If you really want to exploit the potential of the Speed Trap, carry both the larger 2 3/4-in. and smaller 2 1/8-in. lures in your tackle box in a modest color selection keyed to your area. Use the two sizes interchangeably on a single spot and use them on either light (10- to 12-lb. test) line or heavy line up to 20-lb. test. This gives a *wide range* of depth control with only two lures and allows a wide variation of retrieve styles.

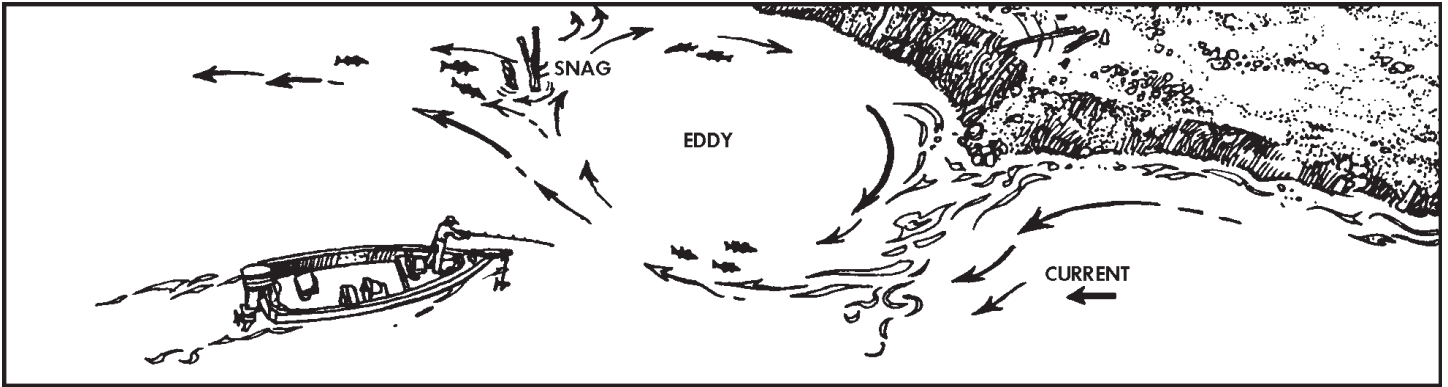
COMPUTERIZED MOLD TECHNOLOGY

The real design story is inside! The Speed Trap features a “minimal mass” thin-wall lure body where all nonessential plastic mass is removed. This lightweight, strong construction produces the action of the finest wood lures in a consistent, durable plastic body.



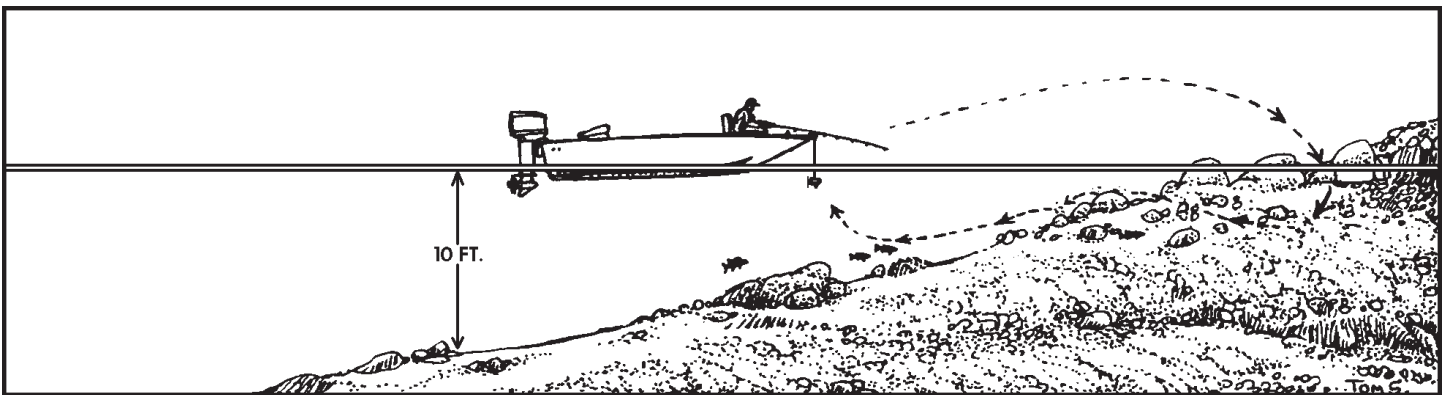
TECHNIQUES AND SITUATIONS WHERE SPEED TRAPS ARE DEADLY!

IN RIVERS



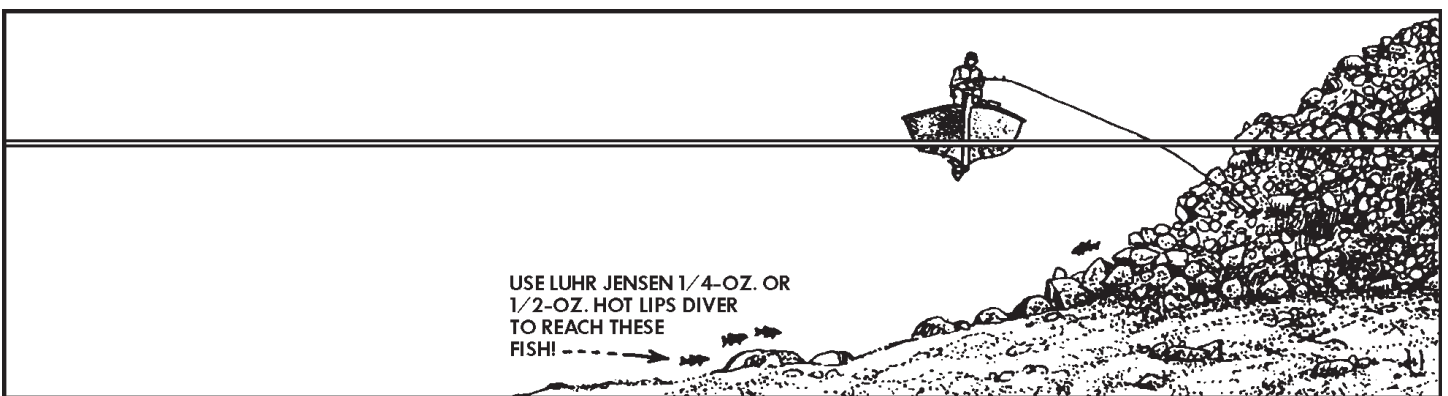
The large Speed Traps have proved to be one of the deadliest river lures ever created. Use their “just right” dive angle and depth in eddies, snags or current-deflecting bank protrusions for hybrids, stripers, white bass and any species holding in current breaks with 8- to 10-ft. depths.

ROCKY RIVER POINTS



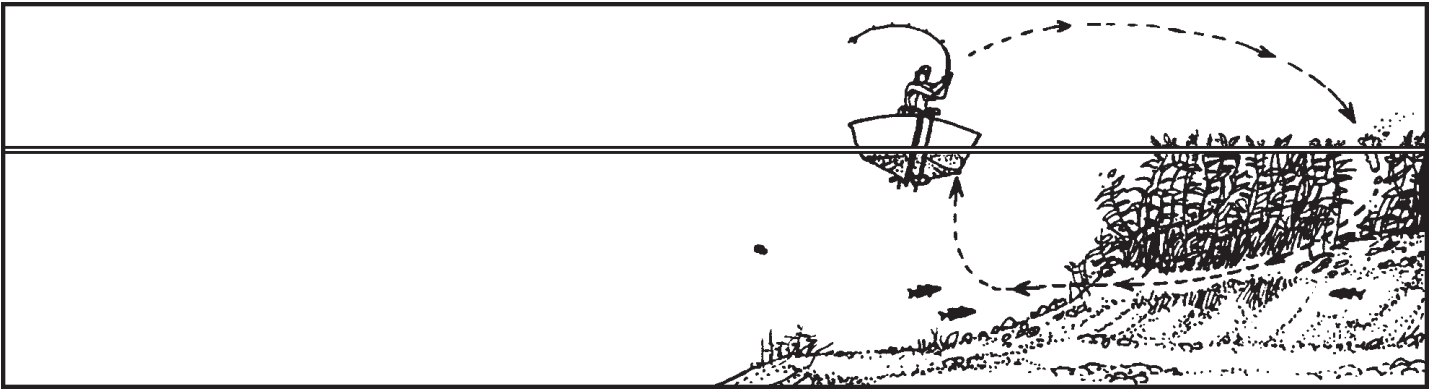
Rake rocky river points or stone-bottomed shelves in the current with both sizes of Speed Traps. This is a devastating trophy smallmouth lure in Crawdad and Fire Tiger finishes.

ALONG RIPRAP



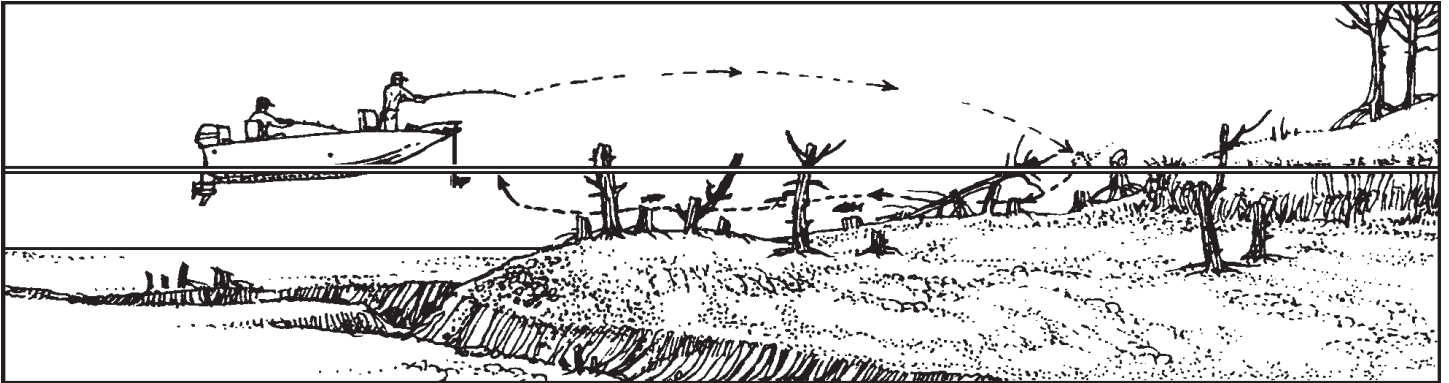
Exceptionally effective at high speeds along riprap areas. Cast parallel or at a long diagonal. Work the base of the ripraps with a deep-diving Luhr Jensen *Hot Lips*®. This combo is hard to beat.

PARALLEL WEED LINES



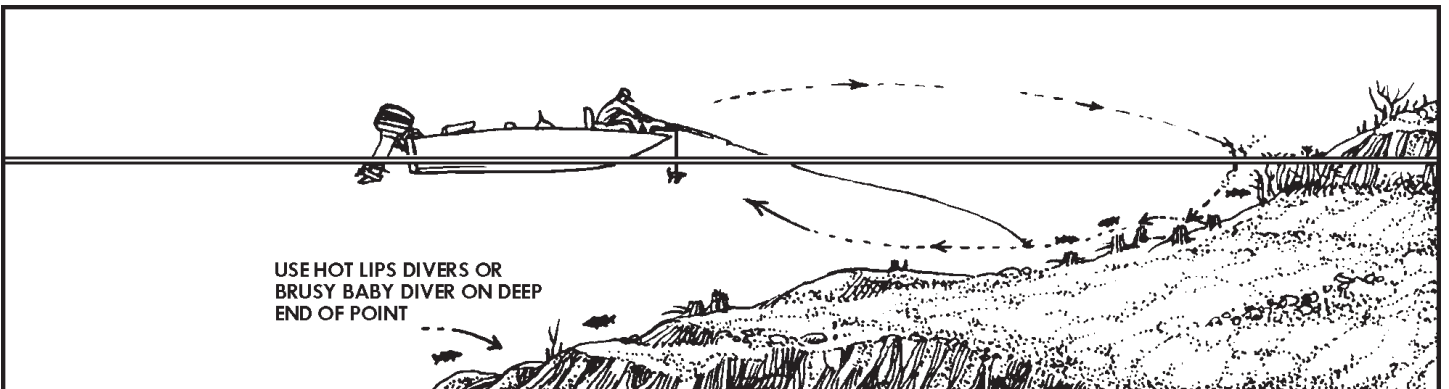
Cast parallel to weed edges in natural lakes and reservoirs. Rip the Speed Trap fast when it touches weeds. When fish will not come up for lipless rattle baits, send down a Speed Trap!

OVER WOODED OR OPEN FLATS



Wooded flats or open flats - bump a Speed Trap along the bottom, or tap wood cover and back it up. It will easily out fish lipless baits in wooded cover. Use heavy line to control depth and abrasion from snags.

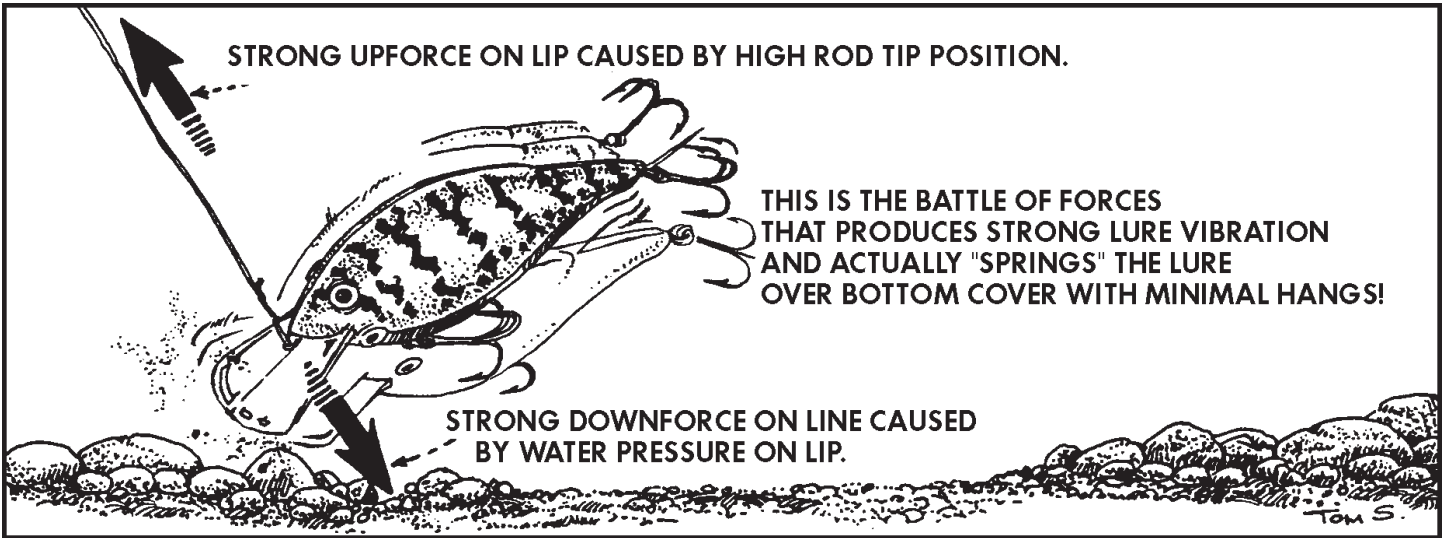
CLAY POINTS IN RESERVOIRS



Work over clay points in reservoirs from the side or end, then follow-up with a Hot Lips or "**Brush Baby™**". This is a super combination to cover all depth options and trigger fish in either an active or neutral activity mood.

LEARN "CONTOURING" WITH THE SPEED TRAP AND ALL YOUR CRANKBAITS!

You can greatly reduce hang-ups by "contouring", plus you will catch a lot more fish. When casting shallow-to-deep, learn to adjust your rod from a high position to a very low one all on one cast. Your lure will spring over many snags and then dig deep as you come out to the boat. Keep the rod very high in the shallows and then smoothly pivot it down as you crank.



BOTTOM "CONTOURING" vs ROD POSITION

Study the very high or even overhead position of the rod as this angler brings his lure from shallow to deep. 6'-6" or 7' rods are great for this, allowing a large range of rod tip adjustment. This technique produces extreme lure vibration, less hang-ups and allows your lure to contour the bottom as a major strike trigger. Follow the illustrations carefully to develop a clear mental image of what your lure is doing. Make every effort to relate the bottom contour to the position of the angler's rod. This is a great technique to practice with the Speed Trap, Hot Lips and Brush Baby.

